

EYE OF THE POTATO

WWW.WPLDISTRICT.ORG

REPORT FROM THE WHITE POTATO LAKE DISTRICT (WPLD) CHAIR

As the leaves change color and our lake waters chill, the first full year of our Lake District is winding down yet our work is just beginning. With the assistance of four created subcommittees enacting assigned projects, your District Board has accomplished many goals. Perhaps the most ambitious is the acquisition of an APM (Aquatic Plant Management) two-year program grant. This project will align the WPLD for potential future Wisconsin DNR AIS (Aquatic Invasive Species) Population Control Grants and permits, if applicable. White Potato Lake's last Comprehensive Management was in 2014. The APM project's anonymous stakeholder survey will gather comments and opinions from lake stakeholders to gain information regarding their understanding of the lake and thoughts on how it should be managed. The results will be used in the public participation planning process in 2025 to raise project awareness, gather comments, create management goals and actions. If you would like to be involved in any subcommittee projects or have any further concerns or ideas, please reach out to me. My contact information is towards the back of this newsletter. Thank you.

Your District Chair working for a healthy lake,
Bob Wittmann

AQUATIC INVASIVE SPECIES (AIS) WPLD COMMITTEE REPORT



The WPLD AIS Committee was successful in acquiring an Aquatic Plant Management Surface Water Grant from the DNR which began in March and will run through 2025. It is a two-phase project consisting of biological surveys and public participation and reporting. Onterra is our biological firm handling the Eurasian Water Milfoil (EWM) mapping surveys (early season and late season), an emergent and floating-leaf aquatic plant community mapping survey and a point intercept survey. Stakeholder input was sought through an anonymous stakeholder survey completed September 30th. The tallying of the 33-question survey will be used to form strategic planning committee meetings, a general attendance wrap-up meeting, and a public comment review period. Following the sub-metered GPS mapping our EWM harvesting firm has conducted three, four-person team, weed pulling events, collecting approximately 100 cubic feet of the invasive weed. Additionally, our volunteers have detected and hand pulled EWM and purple loosestrife from private docks and shorelines.



Derek Thorn of FLOW and the Lumberjack organization brought these beetles (pictured above) to WPL to help control invasive purple loosestrife.

THE NEXT ANNUAL WHITE POTATO LAKE DISTRICT MEETING WILL BE:

SATURDAY, JULY 19, 2025 - 9:00 AM @ BRAZEAU TOWN HALL

10892 Parkway Rd, Pound, WI 54161

WPLD POLICY COMMITTEE REPORT

The Policy Committee supports the efforts of the WPLD Commissioners and Members. The Committee serves in an advisory capacity, allowing for the Board and its members to focus on maintaining a healthy lake. Through the Policy Committee's efforts, the Board benefits from written policies that help guide current and future administrative efforts.

The Committee recommends policies with Chapter 33 of the Wisconsin State Statutes, as well as policies that are needed for guidance around the administrative functions taking place. This team of volunteers meets on an ad hoc basis to meet the Board's needs or requests. Over the past several months, the Committee has drafted and made recommendations for the following policies: Voting Procedures, Travel-Expenses, and Meeting Policy. These policies were submitted to the Board for review and were subsequently approved. The Committee also submitted a policy on Board Commissioner duties, and that policy is anticipated to receive final approval by the end of October 2024.

In addition to the above policies, the role of Parliamentarian has been assigned to this team, with Christine Jensema taking on that advisory role. In her absence the Committee members will assist. Over the remaining months, the Committee will reach out to the commissioners to assess their needs for additional policies. If interested in serving on this Committee, we would love to hear from you. Please contact any of our Committee members to share your interest.

WPLD COMMUNICATIONS COMMITTEE REPORT

The Lake District Communications Committee consists of local volunteers working to share information with the property owners within the Lake District, and the Committee has completed several projects in 2024.

The first project was to develop signs displaying the White Potato Lake District Website address (WPLDistrict.org). These signs are posted at each boat landing around the lake and also include a QR code for the website. The second project was to purchase and install a Lake District information kiosk. This kiosk was mounted outside of the entrance to Brad's Wouters Front 2, a high foot traffic area of the lake, and information regarding the Lake District is posted in the box. Spring and Fall newsletters, such as this one, are ongoing informational communications and are mailed, emailed, and posted on the WPLD website. Two upcoming projects the Communications Committee is working on include assessing the current Lake District website and developing a set of standards for saving WPLD information, such as Meeting Notes and Yearly Budgets.



Mark Williams designed and built the information kiosk. Brad Breuninger of Wouter's Front II gave permission to install the kiosk near the entrance door of the bar.

WPLD FISHERIES COMMITTEE REPORT

The White Potato Lake Sportsmen's Club planted 2,000 perch and 1,000 black crappie this fall. The perch were 6-9" at \$2.40 ea. The crappie were 4-7" at \$2.15 ea. The DNR planted walleyes this year. The WPL Sportsmen's Club supplements planting walleye the alternate year. In 2023 the Club planted 5,000 5-8" walleye and 2,000 6-8" perch. The DNR did not plant muskies in 2023 due to a shortage of feed minnows at the fish hatchery.

Since the formation of the Sportsmen's Club in 1989, 254,742 fish have been planted. Fish planting funds are primarily derived from the Annual Ice Fishing Derby, the Spring Banquet, and membership dues. The Lake District Fisheries Committee members are Sportsmen's Club president Dan Van Straten, trustees Terry Brazeau and Bob Wittmann.



The fish for planting were moved from the fish truck into four tubs. For tracking purposes, a fin on each fish was clipped by the clipping crew before releasing the fish into the lake.

A released perch

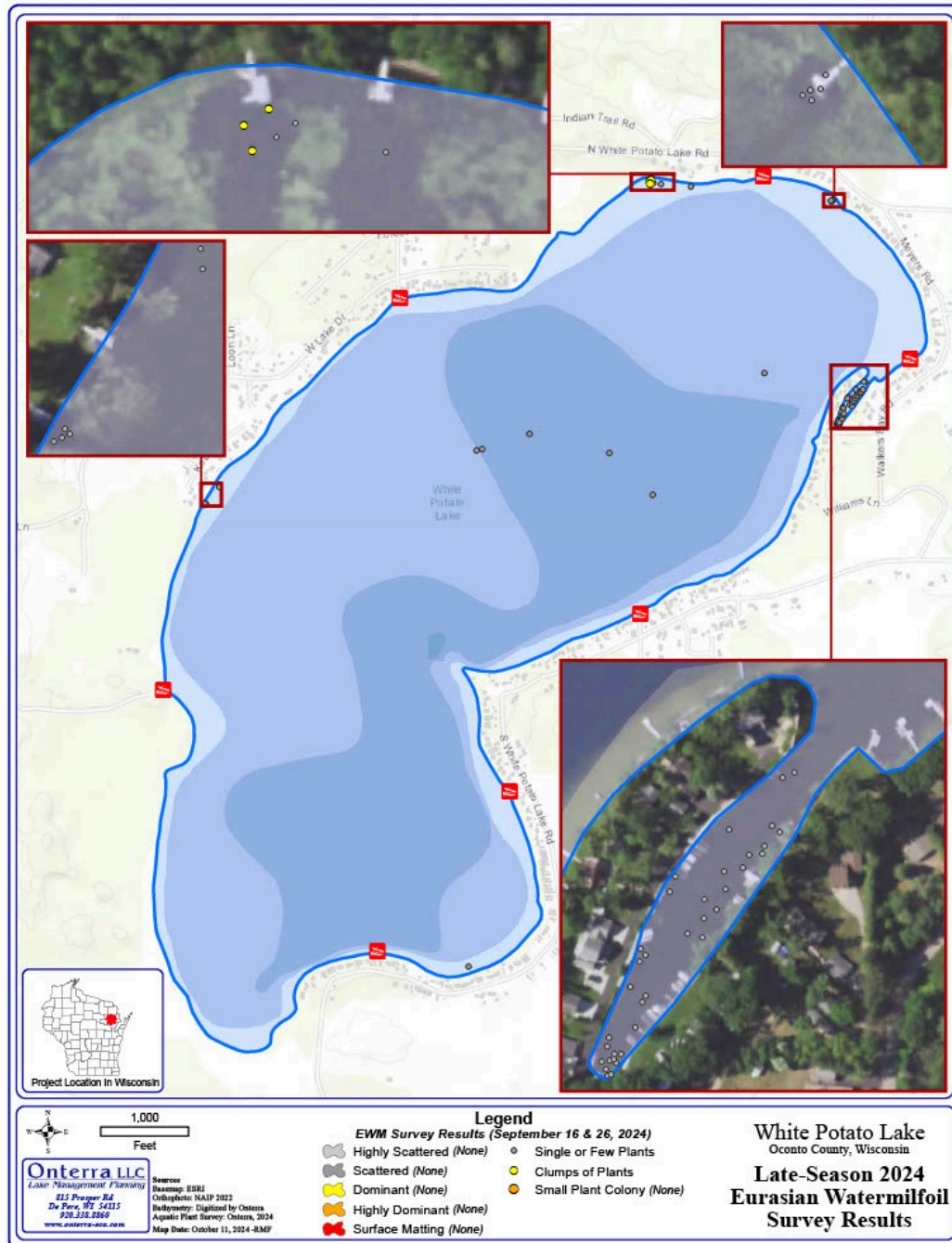
ONTERRA EURASIAN WATER MILFOIL (EWM) MAPPING REPORT

Report received from Aquatic Ecologist Todd W. Hanke with Onterra, LLC

We are currently coming out of our busy field season and working to get lake groups data to help drive the following year's management decisions. We conduct this survey towards the end of the growing season because EWM is typically at its peak growth stage (i.e. peak biomass) and the highest population level for the year. However, on some lakes, complicated dynamics over the summer may result in EWM population declines compared to the beginning of the season. This survey documents the EWM population that the system has going into winter and will be emerging in spring of next year. So, these data are important for driving management decisions for next year. With this summer's environmental conditions following an almost non-existent winter, many of our lakes had a banner year for EWM growth, while other lakes had strong algal presence that limited all aquatic plant growth including invasive watermilfoil.

During two visits in September, we had multiple field crews conduct the late-season EWM mapping survey on White Potato Lake. The crew had excellent weather for the survey, with full sun and little to no wind. During this survey, we systematically meandered the entire lake tracking our meanders to ensure full coverage of the lake. We had all previously known EWM locations loaded into our mapping software in advance of the survey to aid in determining sites that may require added focus.

The attached map shows the results of our survey. For the most part, EWM was identified within areas that it had been found in past surveys. The crews noted that water levels were down somewhat since Onterra's previous visit to the lake in June 2024. This resulted in some previously known EWM sites being in non-navigable areas near shore where water depths were ½ foot or less. No colonized EWM was mapped anywhere in the lake and all occurrences that were located consisted of either single or few plants or clumps of plants. The inset views embedded on the PDF map highlight some of the main sites where EWM was identified. A handful of isolated single plants were also spotted in the open...



...water areas near the middle portion of the lake. The lagoon contained several single or few plants as well. Overall, we are encouraged that the lake-wide EWM population is currently very low.

Over the course of the upcoming months, we will be working up other data collected as a part of this project including the point-intercept survey data, stakeholder survey responses, and community mapping survey data.

EDITORIAL

by WPLD Committee Member Larry Jaeger

I have always heard through the years the stories about the dam on the southeast side of the lake and I've always been curious about it. Once I retired, I decided to volunteer my time to help with lake area projects. Upon going to a recent Lake District meeting, it was brought up that the dam and the area around it needs maintenance. Upon talking with Les Wallace, who owns property next to the dam, Lake District board members and I met with Les at the dam. He discussed what is happening with the dam and the area around it.

The treated wood under the metal screens surrounding the dam will need replacing soon. One dam culvert is rusting out and starting to collapse and there is soil behind the dam that is starting to show signs of washing out. The young trees, as they grow along the berm, will cause the rocks to shift and cause soil to start to wash out under the rocks. The weeds and vegetation at the shoreline are getting high and can be addressed with the help of volunteers. The number of volunteers needed and the scope of the dam maintenance and repairs are in the early stages of discussion.

This is not part of the Lake District responsibilities but should be of concern for the well-being of our lake.



Photos of dam courtesy Larry Jaeger

WHITE POTATO LAKE DISTRICT COMMISSIONERS

CHAIRMAN - BOB WITTMANN

WPLDCHAIR@OUTLOOK.COM

920-242-9044

SECRETARY - MARK WILDENBERG

WPLDSECRETARY@OUTLOOK.COM

920-419-1356

TREASURER - GWEN SCHAEFER

WPLDTREASURER@OUTLOOK.COM

414-313-2129

KEITH SCHNEIDER

KSPLUMBING.KS@GMAIL.COM

920-373-8138

JOHN KNEIBEL

CRAUGUSTUS@AOL.COM

989-859-4976



USE THIS QR CODE
TO VISIT US ONLINE

NEXT ANNUAL

MEETING:

JULY 19, 2025

9:00 AM